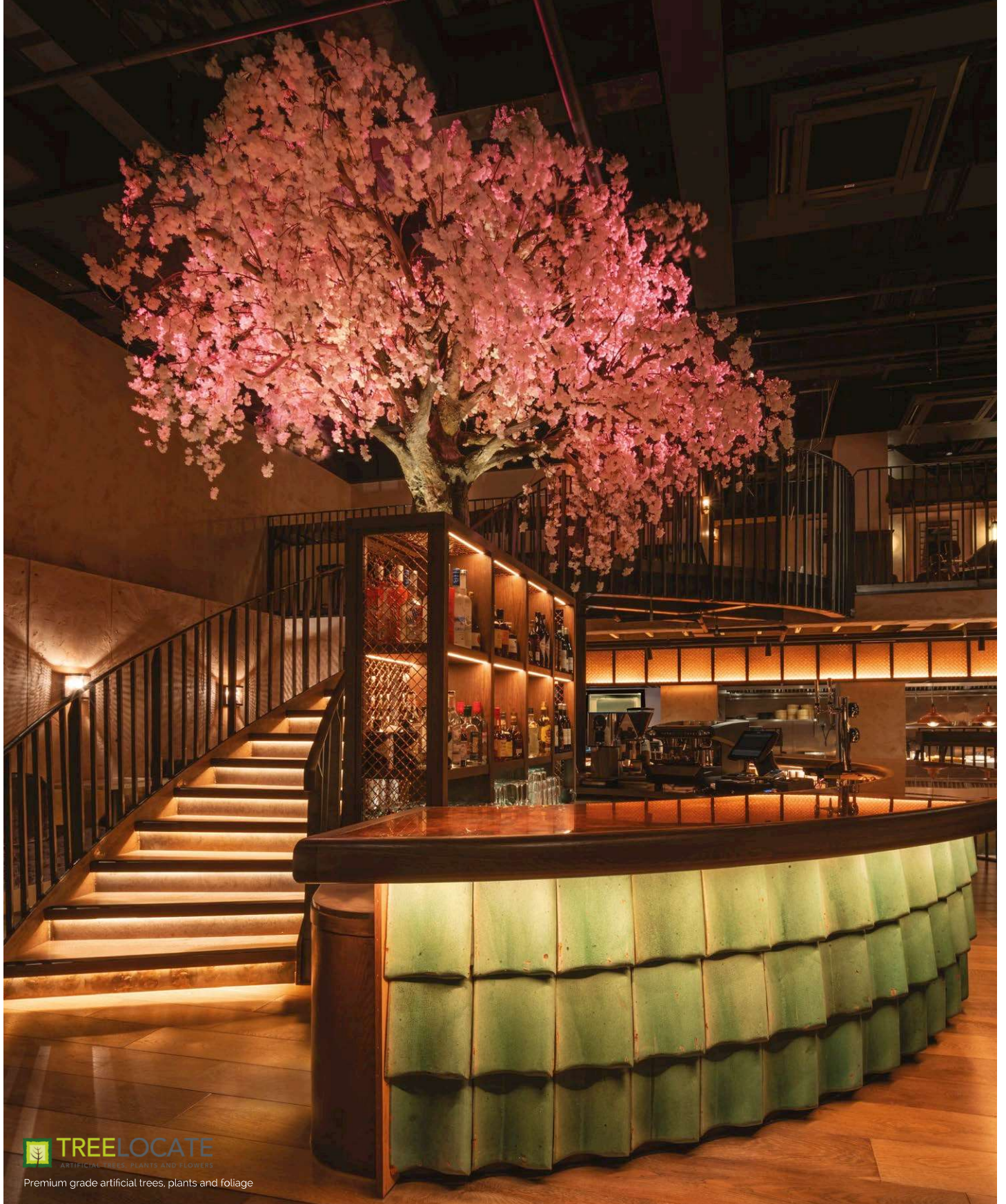


interior designer

BRITAIN'S OLDEST MAGAZINE FOR PROFESSIONAL INTERIOR DESIGNERS

£3.95 JANUARY 2019



Decorex edit.

Post show 'decompress' it is such a delight to be able to look back over the event and reflect on some of our favourite pieces from **Decorex** international 2018, as selected and approved by editor, **Jade Tilley**.

CITY GULL WING SOFA BY DECCA

Anyone failing to spot this beauty of a sofa must have been strolling around Decorex with their eyes close. It packs a punch and is designed to stick out, for all the right reasons. The piece (which, according to Decca, everyone was talking about and sharing on Instagram) was shown in the Assembly fabric by Margo Selby. The sofa itself was designed by Robbie Llewellyn of Bert Frank and has a veneered back and wooden legs with metal sleeves in a brass finish. The industrially woven Assembly cloth explores how colour and structure unite, how yarn can be blended, concealed and revealed within a cloth to create abstract colour studies.

deccalondon.com | www.margoselby.com



BRAID SCULPT & BLOOM ETCH BY GENEVIEVE BENNETT

Where to start with this collection? Braid & bloom is a intricate two part collection showcasing Genevieve Bennett's trademark cut and layered leatherwork on a whole new level. Using leather, brass, silk, wool and glass, Bennett has been inspired by the masters of Art Deco ornamental metalwork and the inspiration has revealed something spectacular. What caught our eye was the attention to detail, seen in the hinges of the elegant room divider. We can't get enough.

genevievebennett.com

THE CHATSWORTH COLLECTION BY KATHARINE POOLEY

Created in partnership with respected English furniture maker Adam Williams. The Chatsworth Collection exemplifies the finest British craftsmanship and luxurious, detailed design. For the six-piece Chatsworth Collection, Katharine has drawn upon her experiences travelling.

For example, abstract cloud formations inspired marble choices on sourcing trips to Italy. Clean lines, aerodynamic ellipses and precise detailing have been carefully realised in a soft, bronze patina in the Adam Williams workshop in Somerset, England. ID is won over by the extreme cuteness of the drinks table.

www.katharinepooley.com

